

Information on Ħaġar Qim and Mnajdra Archaeological Park can be found on Heritage Malta's website, which includes opening and closing hours, highlights of the sites and admission fees. Information leaflets are also available in museums and in tourist information offices.

We offer concession admission fees to seniors, students, persons with disability and their carers. Service dogs are most welcome.

The visit is spread between the Visitor Centre which houses the ticketing, reception, shop and exhibition areas, Ħaġar Qim Temples and Mnajdra Archaeological Park. The visitor centre is 110m away from Ħaġar Qim whilst the two megalithic structures are then 500m apart from each other.

## **VISITING HAĠAR QIM AND MNAJDRA Archaeological Park**

### **Transport and parking**

Bus stops to and from Valletta are located approximately 200 metres outside the Ħaġar Qim and Mnajdra Archaeological Park main entrance. Just outside the main entrance there is a Hop On Hop Off bus stop and the bus stops every hour.

If you are using a privately booked coach, minivan, taxi or leased car we have a public parking area just outside the main entrance of the visitor centre. There are 2 disability parking spaces which are rear accessible once the vehicle is parked. Parking spaces cannot be reserved and are available on a first-come, first-serve basis.



There are no barriers in the parking area and all signage is visible and clear to visitors. The surface of the parking area is smooth and even. There is a ramp leading to the lower level of the visitor centre and there are also steps with handrails leading to the lower level and upper level.

We have 2 benches and an ATM just outside the lower level entrance, which is right in front of the Hop On Hop Off bus stop. Should visitors need assistance, carers can ask at the reception desk and our staff will gladly assist.

### **Haġar Qim and Mnajdra Visitors' Centre**



The main entrance of the Visitor Centre is situated in the upper level of the building and is accessible from the car park either by steps or by a lift from the lower level. At the lower level one can find 4 male restrooms, 4 female restrooms and 1 unisex toilet for disabled persons, with nappy changing facilities for children.

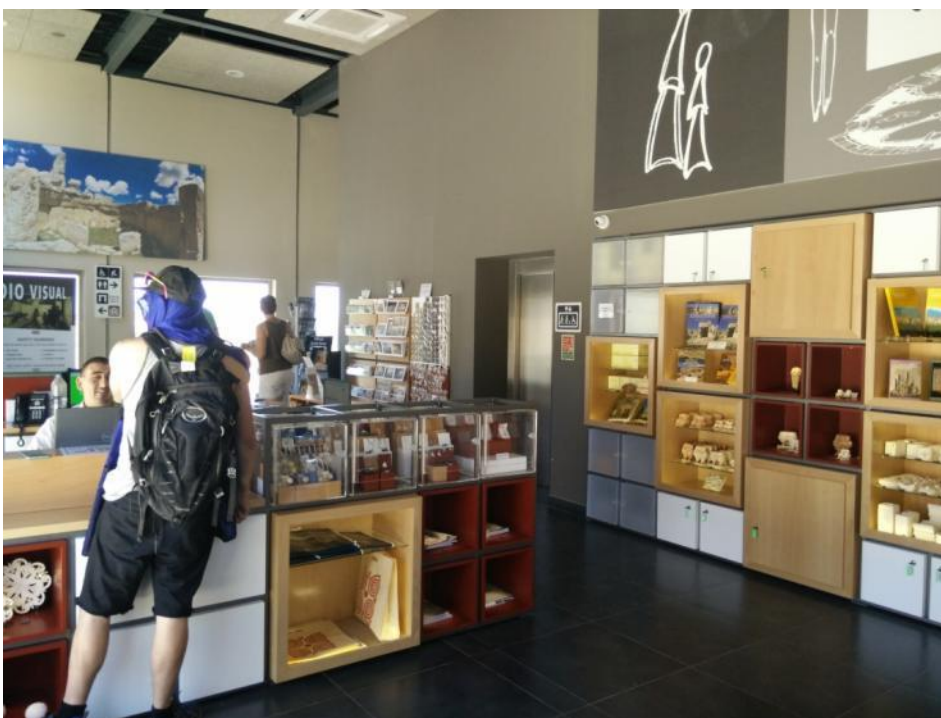


The lower level is also equipped with lockers for visitors should they wish to leave any large bags or luggage. The security guard stationed in the lower level is on hand to provide aid in using the lift and lockers. Next to the lockers there is the lift which can be used by persons using a wheelchair. The lift leads to the reception area of the Visitors' Centre.

### Reception Area, Ticketing & Gift Shop



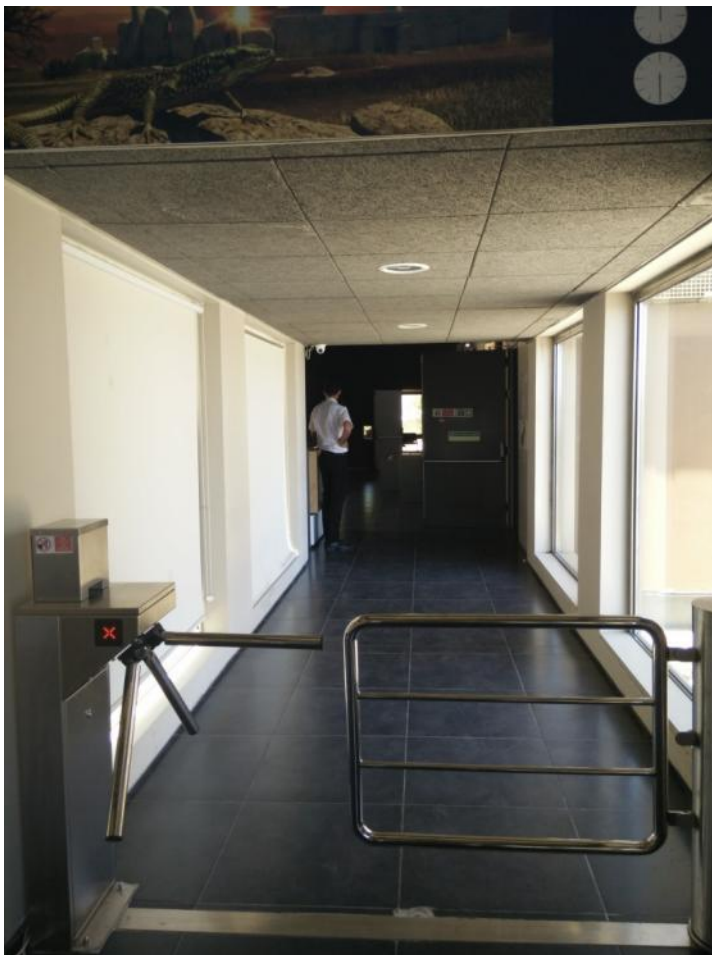
The reception area is situated in the upper level of the Visitors' Centre and is all on one level with no steps or ramps. The reception desks are both at wheelchair height and all the reception area is well lit with natural light and ceiling spotlights.



The gift shop is incorporated in the reception area and one can find all types of gifts, such as small souvenirs, jewellery, books, items aimed specifically for children, healthy snacks and beverages. Items are displayed at different levels. All the signage and prices are clear and visible. In the reception area there is a seating area and 2 restrooms one of which is wheelchair accessible with nappy changing facilities for children and the second restroom is unisex. The reception area is always manned by the front of house personnel and all have been trained in customer care. Each employee has a name tag and the tag indicates the languages they are able to speak. At the reception desk one can opt to use an audio guide for the exhibition area and the temples. The audio guide is available in different languages. Also available is a free audio guide app. which one can download on their electronic devices, a children's version is also available.

### **Exhibition Area**

From the reception area one can proceed through self-operated turnstiles to the Exhibition Area. The exhibition area is all on one level with the reception, ticketing and shop area, with no ramps or steps leading from one area to another.

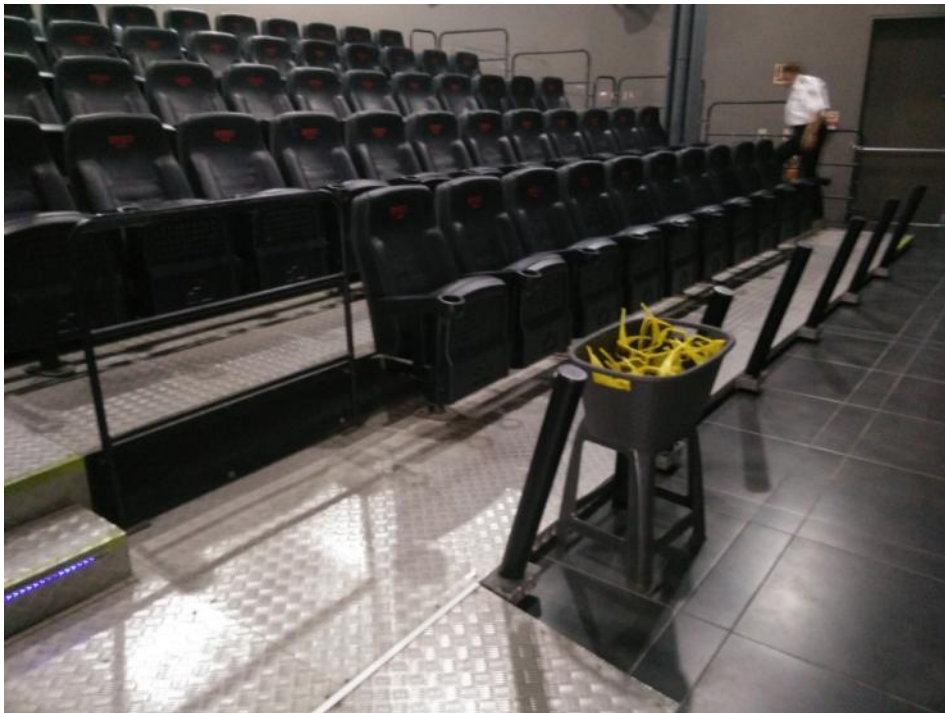


Part of the visit includes a 4D show and there are specific restrictions which one needs to take into consideration before entering the show, such as children under 12 years of age should be accompanied by an adult. Special care should be taken if pregnant, suffering from epilepsy or other serious medical conditions.





A clear safety warning sign is situated just before entering the area where the 4D show is located. The 4D theatre has a space for a wheelchair on the front row.

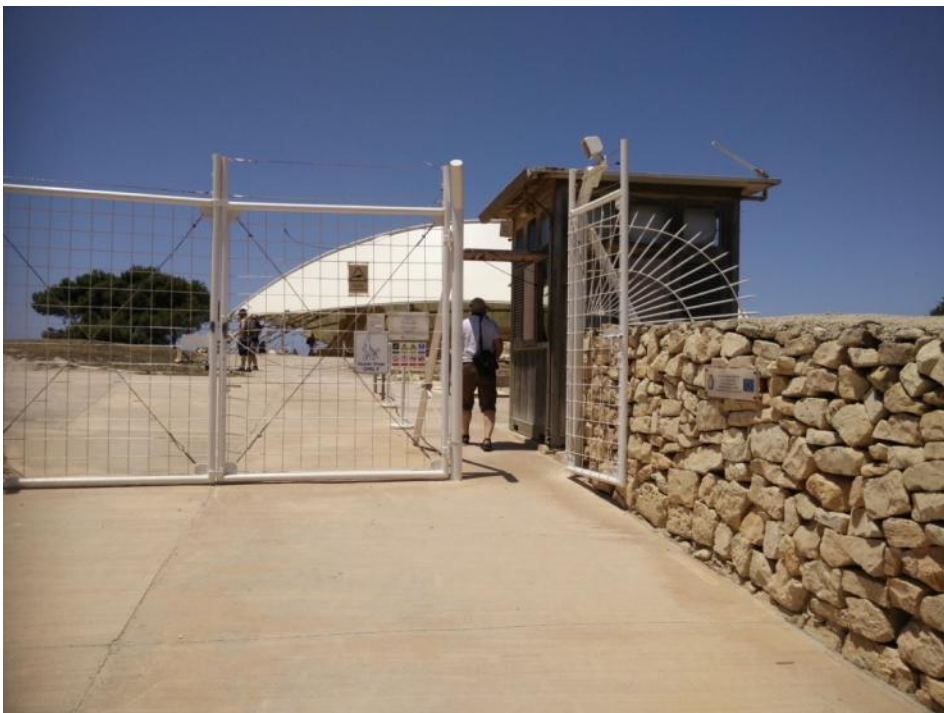


In the exhibition area there are several information panels, audiovisuals and also hands on activities, which are all wheelchair accessible. All information on the panels is written in a large format in Maltese and English.



We also have a children's room with different activities that can be done on site, such as puzzles and treasure hunts.

## Site



The passageway leading to the sites is on one level with gradual ramps and at the entrance of the site there is an open gate with a ticket booth.



The terrain leading from the booth to the temple site is rough and uneven.



At Haġar Qim there is a walkway within the temple which has an even surface. At Mnajdra, parts of the site are on different levels and accessible by means of uneven steps. Hazard signs are located at



both sites. The sites are protected by shelters which provide good diffused natural lighting and protection from the elements.

There are information panels around both sites providing information in a large font in English and Maltese. There are also benches located close to the sites.



The distance between the two sites is 500 metres and the two sites are connected by a paved pathway. The pathway itself has a steep incline.



Weather permitting, services of an electric cab against payment is offered to transport visitors up from Mnajdra to Ғағар Qim.





Halfway between Hagar Qim and Mnajdra there is a 'Picnic stop' which consists of picnic tables and a room with interpretation panels of the landscape. This provides a convenient resting point for those opting to walk between the two temples, although access to the picnic tables and room is over a slightly uneven pathway.

### **Walking trails**

At hagar qim and Mnajdra archaeological park we have two walking trails. The panels along the trails have information about the natural flora and fauna located in the area.

### **Future Plans**

Within the sites we will be installing self-operated turnstiles and there will also be improvements done to the pathway between Hagar Qim and Mnajdra.