



# **Social Story of the National Museum of Natural History**

for visitors on the Autism Spectrum and  
visitors with Sensory Processing Disorder



# Welcome to the National Museum of Natural History

The Museum is found as soon as you enter Mdina's Main Gate, it is found immediately on the right-hand side. Parking is not permitted in Mdina, please make use of the car parks on the outside.

This is the entrance to the National Museum of Natural History.



Once you arrive please go in through the door pictured above and then turn right and go through the door pictured below.



Walk down the corridor pictured down below. The reception is found at the end of this corridor. Here you may buy your ticket; ticket pricing can be found on the website and also on the last page.



There may be other people waiting to buy their ticket, please wait patiently in line. Once you buy the tickets and they are scanned at the reception you may proceed to the exhibition halls.

The courtyard pavement just outside the reception area is pebbled and a bit tricky to avoid, some visitors might find this overwhelming. If you do, please ask the staff for assistance.





Should you wish to visit the restrooms please go through this door just outside the reception area on your right and go down the stairs.



You may start your visit either by going up the staircase pictured below to visit the minerals room or else by walking on and starting from the ground floor exhibits.



To access the ground floor exhibits, please go through this door.





There are signs around the museum to help you find your way.



For the aim of this story we are going to start from the islands room on the ground floor; the islands room is the first room on your right.



There is usually an audio visual going on in this room, if you come during the Autism Friendly Hours (Tuesdays between 1 and 4pm) this will be switched off. In this room you can learn about the Maltese small islands ecology.

When exiting this room, and on your way up, you will come across this diorama to your right. A diorama is a reconstruction of a specific environment. Since this is a Natural History museum you will come across plenty of stuffed and mounted animals, bones, fossils and skulls.



At present no lift is available, thus access to upper floors is via staircase; when you go up the stairs please hold on to the railing.



Upon reaching first floor level you will come across this corridor.



Starting on your left you will find the fossils room. This display highlights the fossilized remains of marine animals found in Maltese rocks.



Upon entering the adjoining room you will come across displays about Maltese rocks, here you can learn about the geology of the Maltese Islands.

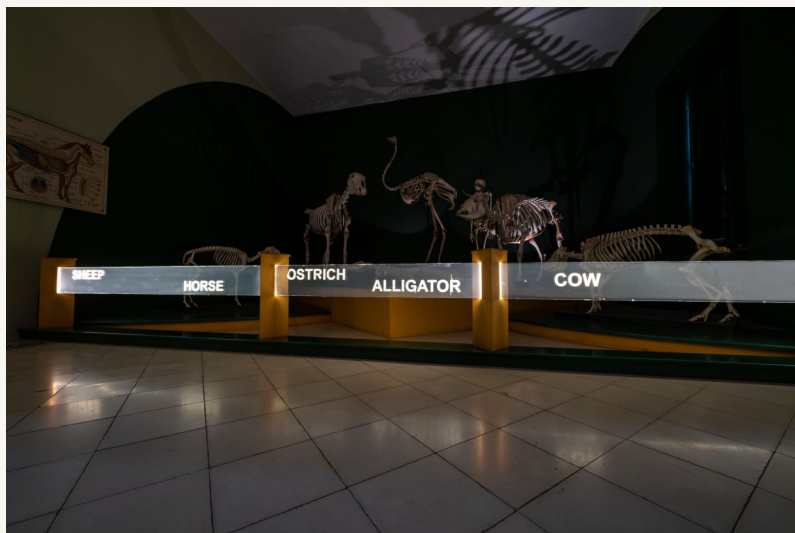


Back in the corridor, proceed further down and go into the next room on your left. This room is dedicated to marine fauna and creatures.





The next room, just at the end of the corridor, is all about different skeletal systems of various animals (including humans).



You can now proceed back to the staircase. On the way back, you will come across two small rooms. The first one is dedicated to marine turtles. During Autism friendly hours, the blue light will be replaced with soft yellow light.



The second room highlights the origin and evolution of humans (human skulls are exhibited here).



More exhibition halls can be found upstairs, please go up via the staircase carefully and hold on to the railing.

Upon reaching the upper floor you will find the reptiles room on the left. Please be careful of the two steps when entering this room. In this room you can admire reptiles from across different continents. If you visit in summer, a fan might be switched on, this might create a low humming sound.



Having seen this room proceed down the corridor and enter the first hall on the left.





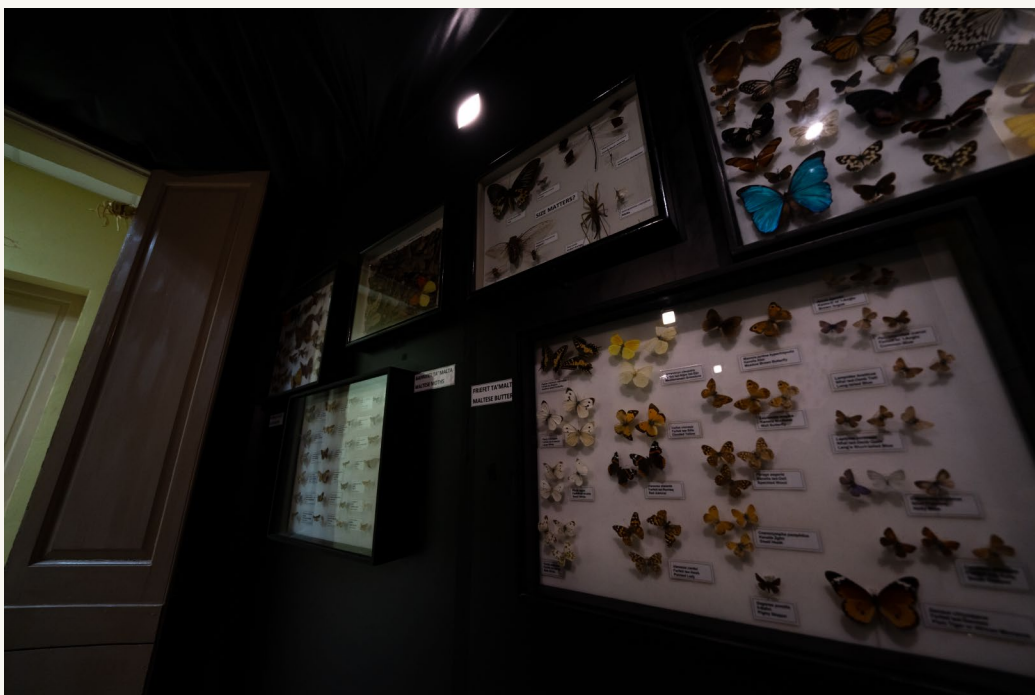
Here you will find a large hall where you can learn all about birds and other animals and different Maltese habitats. In this big hall you will notice a change in temperature due to the air-conditioning, also, one of the showcases is lit with a bright blue light.



Having seen this hall proceed towards the end of the corridor where you will find a room dedicated to shells and molluscs.



On your way out, you will find two more rooms to your left. The first room displays a selection of local and exotic insects.



The last exhibition space on this floor is dedicated to the wet collection. Here you will see a selection of dead animals placed in jars and preserved in a solution. Please note that none of these animals were killed in order to create this collection.



Next to the Wet Collection, is the Quiet Room. It is a space for relaxing and you may go there whenever you feel overwhelmed.



To exit this part of the museum, go down the way you came up and go back to the courtyard.



Access to the minerals and rocks display is through the main door up the stairs. The minerals hall is located to your right.



**Attention!** - there is a strong chemical smell in this room.





It's ok not to visit all of the museum at one time, you may come back to the National Museum of Natural History Museum another day.



This is the museum shop which is in the reception area. When you have chosen what you would like to buy you can pay for it at the reception. There is no need to buy anything however a small souvenir will help you remember your visit.

Now it is time to leave. The exit is the same door that you came in.

We hope you have had a lovely day at the museum and thank you for visiting us!



Contact us for information about accessibility and programs for visitors with disabilities:

Telephone: +35622954323

Email: [education@heritagemalta.org](mailto:education@heritagemalta.org)

The National Museum of Natural History  
Vilhena Palace,  
St Publius Square,  
Mdina MDN 1010

Opening hours: 10:00 – 16:30

The Museum opens on Tuesday, Friday, Saturday and Sunday except on Good Friday, Christmas Eve, Christmas Day, New Year's Eve and New Year's Day.

Tickets:

Adults (18 – 59 years): €5.00

Youths (12 – 17 years), Senior Citizens (60+ years), Students: €3.50

Children (6 – 11 years): €2.50

**Heritage Malta Passport holders - Free**

This resource was created in consultation with Prisms Malta.

