

## **PRE-ARRIVAL INFORMATION**

Information on the Ghar Dalam Cave and Museum can be found on Heritage Malta's website, which includes opening and closing hours, highlights of the sites and admission fees. Information leaflets are also available in museums and in tourist information offices.

We offer concession admission fees to seniors, students, persons with disability and their carers. Service dogs are most welcome.

## **VISITING GHAR DALAM CAVE AND MUSEUM**

### **Transport and parking**

The fittingly named bus stop Dalam is right outside the museum entrance and is served by three routes:

- Route 80 leaves Valletta for Birżebbuġa every hour from 07:00 to 21:00
- Route 82 leaves Valletta for Birżebbuġa every 15 minutes from 05:05 to 22:45
- Route 85 leaves Valletta for Marsaxlokk every hour from 05:30 to 19:30

Other sources of transportation are the Hop On Hop Off buses, taxis and private cars. A large carpark allows parking adjacent to the entrance.



## **G HAR DALAM CAVE AND MUSEUM**

### **Reception area and Museum**

The museum is located below street level and to enter the main door of the museum there are a number of 13 steps with a handrail. There is also a ramp which can be used for wheelchair users.



Once you access the museum, all interpretation and facilities are wheelchair user friendly.

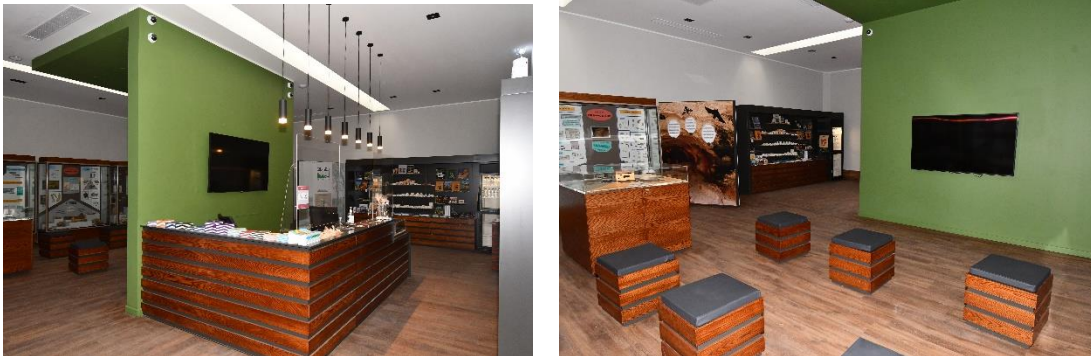
There are visible panels throughout the foyer indicating where are the restrooms, reception and museum halls.



At this level there are restrooms including two gender neutral toilets, and one gender neutral available for wheelchair users, including a nappy changer.

## Reception Area, Ticketing & Gift Shop

The reception area is situated at the entrance of the main hall and is all on one level with no steps or ramps. The reception desks are both at wheelchair height and all the reception area is well lit with ceiling spotlights. Above the reception desk there is a screen indicating price lists, visiting hours and other relevant information. In the hall you also find a screen showing information videos about the sites. These videos are available in both Maltese and English languages, with and without subtitles. And are also for both children and adult visitors.

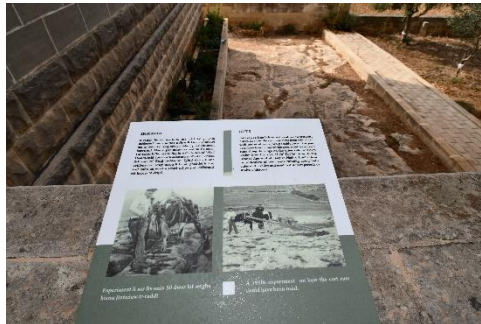


The gift shop is incorporated in the reception area and one can find all types of gifts, such as small souvenirs, jewellery, books and items aimed specifically for children. Items are displayed at different levels. All the signage and prices are clear and visible. The reception area is always manned by the front of house personnel who have all been trained in customer care. Each employee has a name tag which also indicates the languages they are able to speak. In the foyer, going out of the reception area there is also a small seating area.



## Ghar Dalam Cave

The cave which is situated about 4 storeys below the level of the museum, is reached by means of long tile paths and steps with handrails. Along the way there are 5 benches. There are also interpretation panels along the way.



## FUTURE PLANS

Heritage Malta is currently working on the creation of a Heritage Park that, in addition to Ghar Dalam Cave and Museum, will incorporate Wied Dalam, Ta' Kaccatura and Borg in-Nadur. Studies are being carried out on how to make the whole park accessible to everybody.